

# Information Night on Enrolment Killina Presentation For Academic Year 2021-22



# You are all very welcome and thanks for taking the time to join us



- Who are we?
- How the school is organised
- What is expected of a Killina student
- Transfer to secondary school
- Important policies
- Subject Choice
- School Finance
- Enrolment procedure

# History



- 1812 School founded
- 1817 Primary School
- 1948 Secondary School Top
- 1965 School moves to Co Education
- 1977 Full Secondary School status
- 90's Growth in student numbers
- 2001 Resource centre opened
- 2009, 2018 Extensions added
- 2020 Extension being progressed



# CEIST Charter



- **Trustees- CEIST**

## *Promoting Spiritual and Human Development*

We believe a knowledge of and a personal relationship with Jesus Christ give meaning and purpose to our lives.

## *Achieving Quality in Teaching and Learning*

We are committed to excellence and to continually improving the quality of teaching and learning.

## *Showing Respect for Every Person*

We respect the unique and intrinsic value of every person.

## *Creating Community*

Our schools are faith communities of welcome and hospitality where Gospel values are lived and where there is special care for those most in need.

## *Being Just and Responsible*

We seek to act justly and responsibly in all our relationships.

# Killina Presentation



- All round education – holistic approach
- Quality of Relationships
- Pupil involvement – extra curricular
- Excellent atmosphere
  - good place to be
  - a caring environment
- Formation – mature young men and women with high personal standards

# Why choose Killina Presentation



- The only co-educational Voluntary Secondary School in the area.
- Boys and girls taught together.
- A healthy mix of town and country.
- A country setting and caring environment.
- A hard working and dedicated staff.
- Excellent record of academic achievement.
- Comprehensive extra curricular activities.
- A broad and well balanced curriculum.
  - ✦ J. Cycle, TY, L. Cert, LCVP.



- A full and busy timetable.
- All students remain on campus throughout the day.
- Hot meals at lunchtime.
- Smaller class sizes
- All the facilities needed to deliver.
- Plans for improvements to the school.
- An inclusive school.
- A caring school where students can be happy and achieve.

# School Organisation



- Board of Management
- Principal & Deputy Principal
- Year Heads
- Form Teachers – subject teachers
- Guidance/ Counselling Team
- Learning Support Team
- Resource Centre
- Student Council
- Ancillary staff
- Mentors



# Promoting Positive Behaviour



- Respect for people
- Respect for property
- Application to work
- Creating excellent relationships
- Excellent leadership and example
- Catching the students doing good and applauding them

# Promoting Positive Behaviour

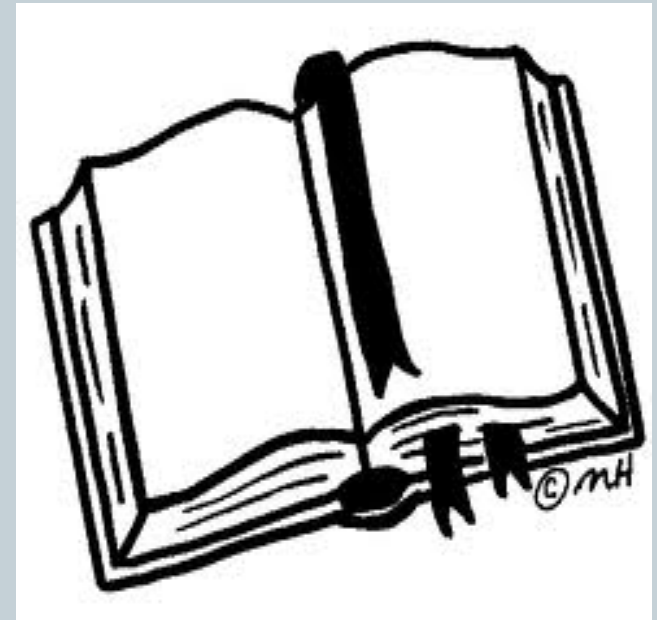


- Creating a CARING environment is very important to us.
- Students will often forget what we taught them but they will never forget how we made them feel.
- Relationships matter
- If children are happy, they can learn.

# Code of Behaviour Journal



- Journal – our link with you
- Homework diary
- Record of learning
- Notes
- Signature of parent/guardian



# Important Policies



- Code of Behaviour
- Internet usage
- Attendance and participation
- Child Protection
- Anti-Bullying – make sure to tell and encourage your son/ daughter to let us know what is happening.



# Subjects on Offer

1 <sup>st</sup> Year		2 <sup>nd</sup> and 3 <sup>rd</sup> Year	
1	English	1	English
2	Irish	2	Irish
3	Maths	3	Maths
4	Religion	4	Religion
5	Geography	5	Geography
6	History	6	History
7	Science		
8	<b>Choose FOUR options from</b>	7	<b>Choose FOUR options from</b>
9	Business, Home Economics,	8	Science, Business, Home Economics,
10	Tech Graphics, French, Wood	9	Tech Graphics, French, Wood
11	Technology, Music, Visual Art, German, Spanish	10	Technology, Music, Visual Art, German, Spanish
	WELLBEING (non examination)		WELLBEING (non examination)
	CSPE		CSPE
	SPHE		PE
	PE		SPHE
	Guidance		Guidance

# Senior Cycle subject options



<b>English</b>	<b>Music</b>
<b>Irish</b>	<b>Art</b>
<b>Maths</b>	<b>French</b>
<b>Physics</b>	<b>German</b>
<b>Geography</b>	<b>Biology</b>
<b>History</b>	<b>Ag Science</b>
<b>Chemistry</b>	<b>Accounting</b>
<b>Business</b>	<b>LCVP</b>
<b>Home Economics</b>	<b>Economics</b>
<b>DCG</b>	<b>Religion (Examinable/ non examinable)</b>
<b>Construction Studies</b>	<b>LCPE (Examinable/non examinable)</b>

# New Junior Cycle and your child



- All subjects now in the new Junior Cycle format.
- JCPA? What's new?
- HL and OL in Eng, Irish, Maths only.
- One paper of max 2 hour duration.
- (CBA's) School based component in yrs 2 and 3 only.
- Programme of Wellbeing.
- Maximum of 10 examinable subjects.

# Transfer Programme



- A detailed consultation with 6<sup>th</sup> class teachers
- Educational Passports (6<sup>th</sup> Class to 1<sup>st</sup> Year)
- CAT tests
- Making the transition as easy as possible for the students



# Transfer Programme



- Time to get to know their Form Teacher and Mentors
- Time to learn the Rules & Routines of the school  
i.e. timetable, lockers, journal, study skills etc.
- Bonding day
- An opportunity to ask questions
- A time to make new friends
- A place where they feel safe and secure

# School Finance



- School admin fee.
- Locker rental.
- Book Rental scheme.
- Pupil Insurance
- School uniform
- Voluntary Subscription



Where there are issues of financial concern, then feel free to discuss this with the Principal in confidence.

# Transport to and From Killina

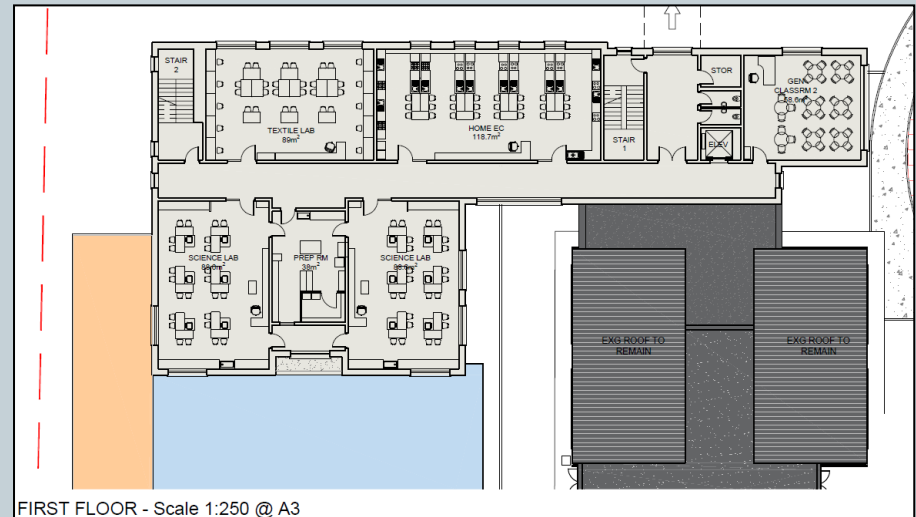
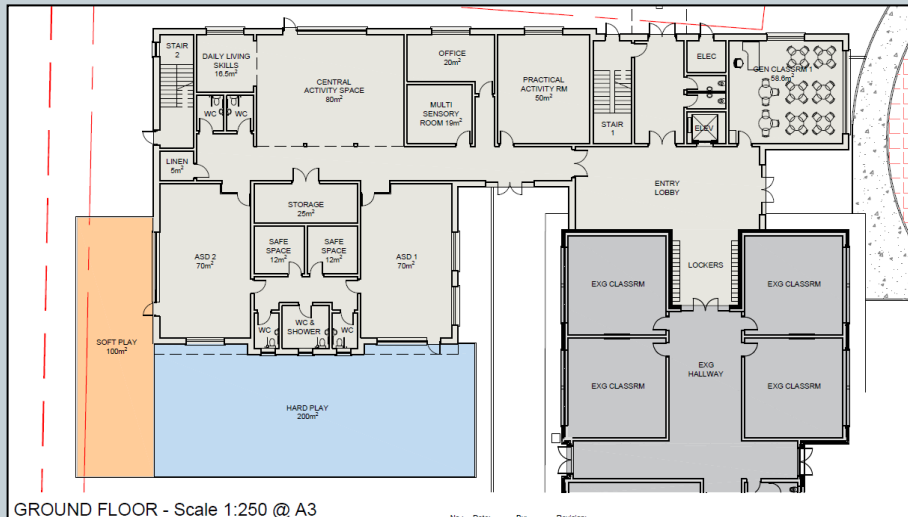


- Bus Eireann and a number of private operators
- Information on transport to and from the school is available from the school.
- The routes served by the various bus operators is available from the school office. It lists the various pick up points, timings etc

# Development plans



- A two classroom ASD Centre (Nagle Centre)
- Two Science laboratories
- A second Home Economics room and textile room
- Two additional classrooms
- Provision of SET rooms



# Enrolment



- All in keeping with new admissions legislation.
  - Open for three weeks.
  - Admissions Policy and form available online.
  - Annual admissions notice available online.

The school will commence accepting applications for admission on	<b>Friday October 16<sup>th</sup> 2020</b>
The school shall cease accepting applications for admission on	<b>5pm Friday November 6<sup>th</sup> 2020</b>
The date by which applicants will be notified of the decision on their application is	<b>Monday 16<sup>th</sup> November 2020</b>
The period within which applicants must confirm acceptance of an offer of admission is	<b>Tuesday 24<sup>th</sup> November 2020</b>

# How do you verify what I have said ?



## Do your homework

- Talk to parents of students in our school.
- Talk to our students.
- Talk to our teachers.
- Visit independent websites
  - ✦ [www.education.ie](http://www.education.ie)
  - ✦ [www.schools.ie](http://www.schools.ie)

Feel free to contact the school at  
057 9355706 on Thursday or Friday  
between 9am and 5pm with any queries.



**THANK YOU**